



HYDERABAD ■ DELHI ■ PUNE



DUBAI ■ ABUDHABI



Tel: +91 40 6555528, Mobile: +91 9391085830, Email: galaxy@galaxygeomatics.com

BRANCH OFFICE : G-50/3, Shaheen Bagh, Okhla, J.M.I., New Delhi.

Tel: +91-11-60606098, Mobile: +91 9650676728, Email: delhi@galaxygeomatics.com

www.galaxygeomatics.com

We are also at :

DUBAI

ABU DHABI

www.alwarqasurvey.com

www.alwarqasurvey.com

About Galaxy

Galaxy Geomatics was established in 2008 with an expert in the field of Land Surveying in an efficient way. We are engaged in Land Survey Engineering Services and Educational training for the core students creating awareness among the students/trainee. We have enhanced our business to Automatic Vehicle Location in providing complete tracking/security solutions for various vehicles with our wide range of products & services - Galaxy Track Zone. Our extensive circulation network and sensible provision have given us superiority over the other leading establishments in the similar business scope. We have created land mark in Hyderabad and New Delhi with Excellency in technology. Our International Head Offices are located at Dubai and Abu Dhabi. Galaxy Geomatics has got a proven track record of undertaking and executing several large projects through its committed and experienced team. Motivated with a robust persuasion to succeed and accomplish better.

Mission

Our mission is to build a strong, viable and long term relationship with our customer, by providing excellent service conforming to international standards in a short span of time.

Vision

Our Vision is to be an exemplary leader in Dubai providing quality service to all our esteemed clients.

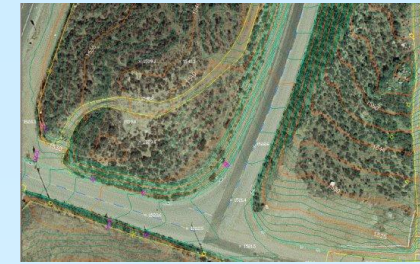
Values

We uphold the values of mutual respect, unwavering integrity, responsive teamwork and selfless service.

Our Services

- ✓ **Topographical Survey**
- ✓ **Roads and Bridges**
- ✓ **Pipeline Survey**
- ✓ **Power Transmission Line Survey**
- ✓ **Boundary Survey**
- ✓ **Estimation of Earth Quantities**
- ✓ **CAD & GIS Services**
- ✓ **Leveling Works**
- ✓ **Hire of Instruments**
- ✓ **Traffic Survey**
- ✓ **Hydrographic/Bathymetric Survey**
- ✓ **Aeronautical Survey**
- ✓ **Aerial Survey Verification (GIS Projects)**

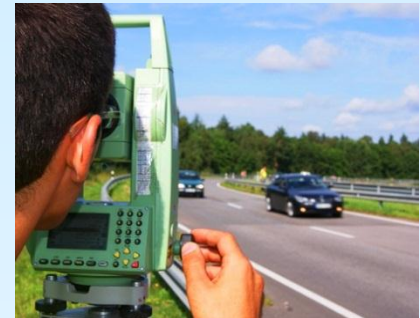
Topographical Survey



The purpose of a TOPOGRAPHIC SURVEY is to gather survey data about the natural and man-made features of the land, as well as its elevations. From this information a three-dimensional map may be prepared. You may prepare the topographic map in the office after collecting the field data by GPS or Total Station.

Roads & Bridges Survey

We offer a full range of planning, design, project funding and management services for bridge and highway projects. We offer special expertise in project economics and finance, program management, seismic analysis, deep marine foundations, intermodal systems, vessel impact, and scour analysis. These specialized services allow us to provide clients with a high level of value-added services for the complete range of project development - planning through design and construction. In addition to conventional highway design, our structural capabilities include inspection, planning, analysis, design, and construction document preparation for the rehabilitation, retrofit or new construction of bridges, trestles and grade separations. Galaxy Geomatics has planned or designed bridges ranging from one of the world's largest freeway to freeway interchanges.



Pipeline Survey



Pipeline Documentation is helpful and important allowing for future reference and review. It provides many benefits in areas such as preliminary, land issues, clearing, construction, restoration, environmental, and much more. Pipeline works very closely with all contributing contractors and agencies, and is dedicated to customer service. We are raising the standard in documenting the installation of pipelines.

Power Transmission Line Survey

Power transmission systems can translate into large savings. Gates leads the way in the development of cost and energy efficient belt drive systems and now brings you its new generation of Quad-Power® III notched raw edge narrow section V-belts. Gates Quad-Power® III belts deliver higher power ratings, increased trouble-free service life and reduced energy consumption. Identification Durable blue marking indicating type and dimensions.



Boundary Survey

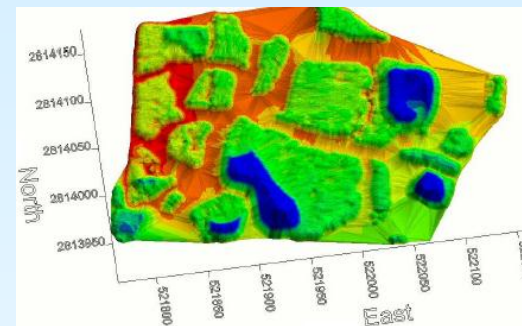


Boundary surveys are frequently necessary to confirm the location of property lines on architectural projects. The location of property lines is a critical element in projects. Surveying is an integral part of the industry. Surveyors create accurate, detailed topographic and utility location maps that serve as the basis for critical design decisions.

Accurate boundary information is also necessary so design professionals can locate buildings and other site amenities where they meet regulatory and jurisdictional requirements.

Estimation of Earth Quantities

Asteroid and comet impacts have played a major role in the geological and biological history of the Earth. It is widely accepted that one such event, 65 million years ago perturbed the global environment so catastrophically that a major biological extinction ensued. As a result, both the scientific community and the general populace are increasingly interested in both the threat to civilization and the potential environmental consequences of impacts. The natural hazard associated with the major environmental perturbations caused by impact events. To provide a quick and straightforward method for estimating the severity of several of these environmental effects, we have developed a free-of-charge, easy-to-use impact effects.



CAD and GIS Service



In emerging technology paradigm, "Geographical Information System (GIS)" has emerged as powerful tool which has potential to organize complex spatial environment with tabular relationships. The emphasis is on developing digital spatial database, using the data sets derived from precise navigation and imaging satellites, aircrafts, digitization of maps and transactional databases. The power and potential of GIS is limited only by ones imagination.

Leveling Survey

Leveling work required is identified from site documents. Leveling instrument is set up and adjusted systems for measuring and recording are selected in accordance with site documents. Leveling instrument is checked for accuracy prior to taking levels. Back sight and foresight distances should be approximately equal to avoid any errors due to collimation, refraction or earth curvature.



Hire of Instruments



The Trimble 5800 GPS system offers a 24-channel dual-frequency GPS receiver, containing Trimble's proven Maxwell technology for robust tracking in difficult GPS environments. Kinematic surveying SET500 and SET600 are outfitted with versatile software that enhances any surveying project. Partnered with the SET500/600's ergonomic keyboard, you can spend less time learning to operate the software, and more time concentrating on your project. Use the SET500/600's onboard software to perform a wide variety of survey functions.

Traffic Survey

GALAXY GEOMATICS was established to cater to the needs of Transportation Planners, Transportation Engineering Consultants and Architects. The Company targets to deliver consulting services in the field of Transportation Engineering, Traffic Data Collection, Environmental Studies, Traffic Impact Studies as well as quality field data collection with utmost accuracy. Our expert team is also capable of conducting large scale Transport Surveys required for developing city-wide transport demand models and Manual Trip Generation. In addition, we offer full range of traffic engineering services.



Hydrographic/Bathymetric Survey



Hydrographic Survey Company deals in all kinds of Hydrographic survey for the clients. We are rendering in this survey field since many decades and able to do the commendable job. It is the science of measurement and description of features which affect maritime navigation, marine construction, dredging, offshore oil exploration/drilling and related disciplines. In hydrographic surveying, our professionals study the quantities, distribution, circulation and physical properties of water bodies and also to provide an understanding of the local groundwater system for onsite wastewater disposal for future management of water as per the requirement. Apart from this we also hold expertise in Hydrographic Survey Boat. With the help of all these study we are able to assist in the documentation of local hydrogeological conditions, wastewater practices, and evaluation of water quality. All these data are offered to the clients as per the requirement. We never compromise on quality.

Aeronautical Studies Survey

Aeronautical surveying is a highly specialized type of surveying. It requires an extensive knowledge of the requirements of the Federal Aviation Administration (FAA) Advisory Circulars in order to successfully complete the work to the accuracies required for acceptance by National Geodetic Survey (NGS) and the FAA. This survey work forms the basis for the FAA Airports GIS initiative and is critical for the development of safe and accurate approach procedures.



Aerial Survey Verification (GIS Projects)



Vertical Services Integration can provide aerial reconnaissance and evaluation service to corporate customers such as developers, surveying companies, governmental agencies, and environmental analysis and documentation companies. Aerial surveying is an invaluable tool for large scale planning, evaluation, mapping, and documentation of large land parcels and plat planning projects. As opposed to fixed-wing airplane options, helicopters can provide a lower, slower and more stable platform for assessment of

fixed area sights, large infrastructure projects, environmental impact and planning projects, large-scale development projects, as well as individual building or site surveys.

Regards:

Mr. Mohammad Abdul Aleem

CEO

+91 9581242102

Mr. Layeeq Ahmed Khan

Manager

+91 9391085830